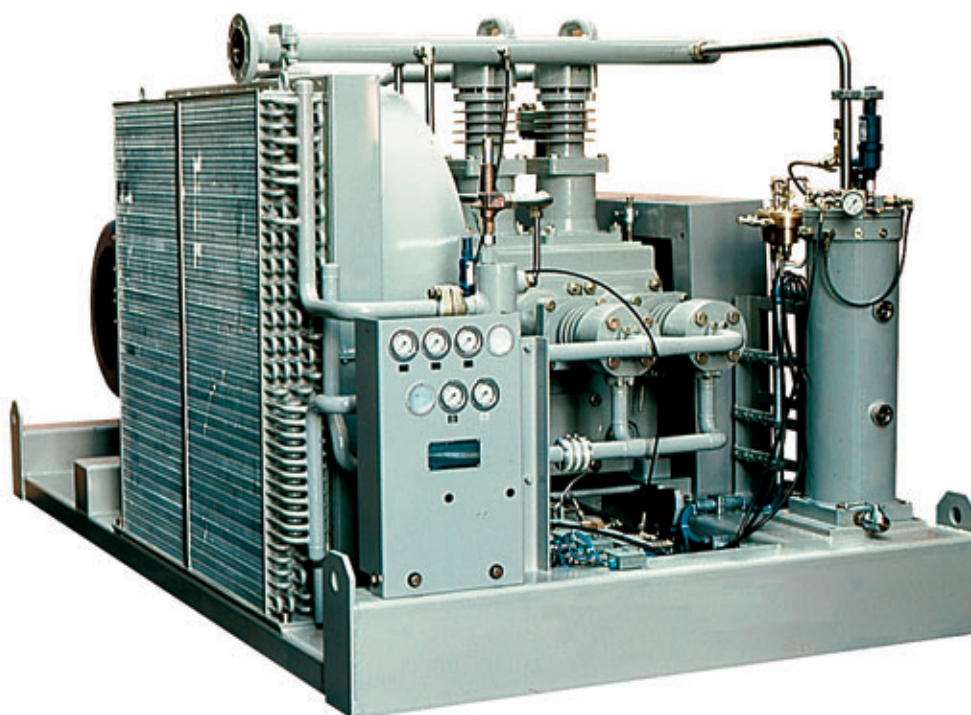




## Compressor Type CT

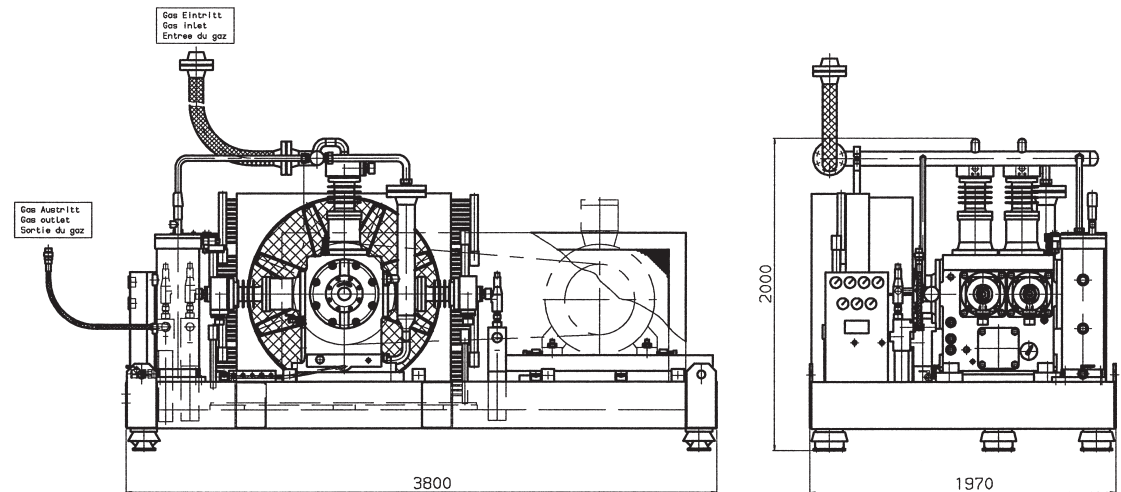
The **air- or water-cooled**, lubricated trunk-piston compressor type CT offers field-proven **ruggedness** and **reliability**. Due to its **simple** and **compact design** the unit is **space-saving** and **easy to maintain**. The frame mounted compressor is bedded on **vibration dampening elements** and therefore requires no special foundation or factory erectors for its **easy installation**. Low compression ratios per stage allow high cylinder loads with comparable low temperatures. Results are **high volumetric efficiency**, **low maintenance** and **more safety**.



### Reliable and high performance – Your benefit:

- Final pressure up to 351 bar
- Pressure tight, sealed crankcase
- Flow rate up to 2'150 Sm<sup>3</sup>/h
- Air- or water-cooled
- High volumetric efficiency, low maintenance, more safety
- Easy to install, no special foundation required
- Easy to maintain
- Simple, compact design
- Bedded on vibration dampening elements

## Dimensions



## Technical Data\*

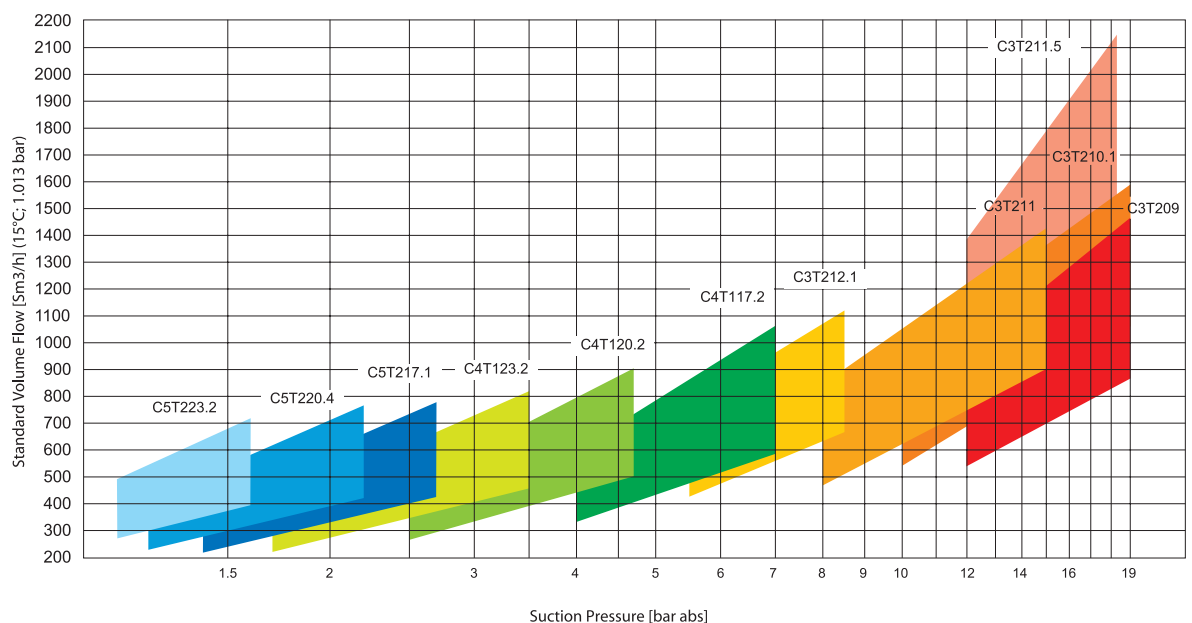
Suction pressure: up to 19 bar abs\*\*  
 Final pressure: up to 351 bar abs  
 Flow rate: 220–2'150 Sm<sup>3</sup>/h  
 Power supply: max. 200 kW  
 Weight: approx 4'800 kg (without motor)

Gases: Natural gas, H<sub>2</sub>, He and other noble gases, air, N<sub>2</sub>, typical industrial gases, etc.

Applications: CNG and H<sub>2</sub> refueling systems, bottle filling, oil- and gas production, chemical/petrochemical industry, gas purification and recovery, air-blast circuit breaker systems, seismic oil and gas exploration, etc.

Options: Filter systems, control cabinets, acoustic canopies, etc.

## Flow rate diagram\* (e.g. Natural gas, final pressure 271 bar abs)



\*Subject to modification. Binding data on request. \*\*Higher inlet pressures available on request.

B-06-en 05.2005



**GreenField**

**GreenField AG**  
 Güterstrasse 107  
 CH-4133 Pratteln  
 www.greenfield.ch

Tel. +41 61 827 35 35  
 Fax +41 61 827 34 34  
 info@greenfield.ch