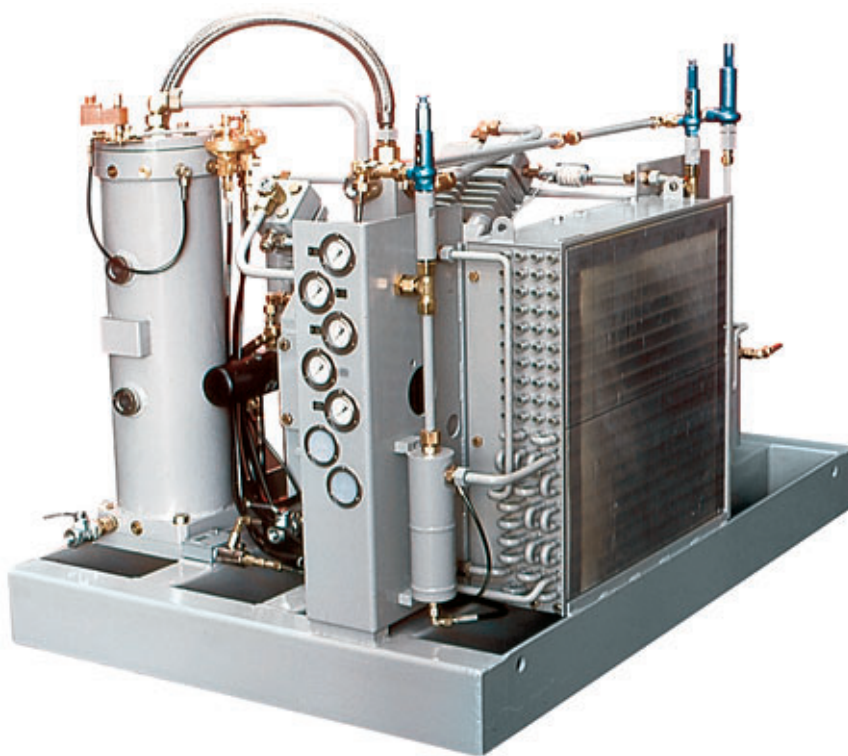




## Compressor Type CC

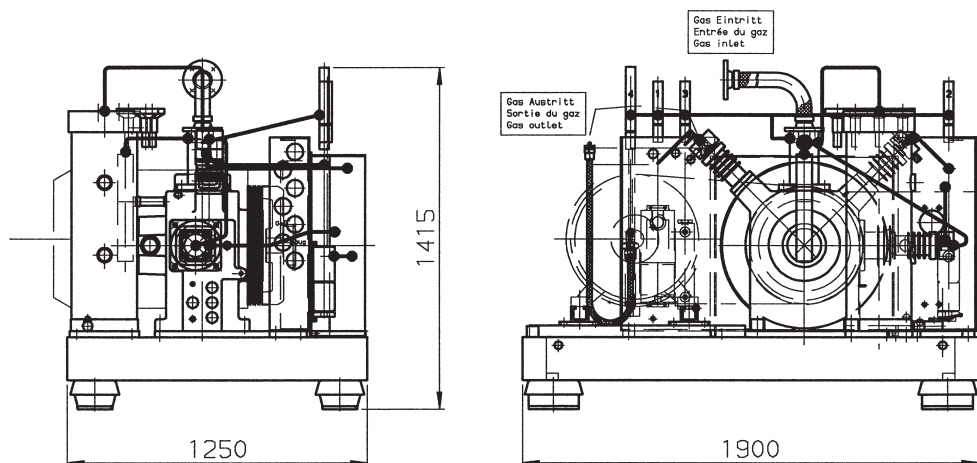
The air-cooled, lubricated trunk-piston compressor type CC offers field-proven **ruggedness** and **reliability**. Due to its **simple** and **compact design** the unit is **space-saving** and **easy to maintain**. The frame mounted compressor is bedded on **vibration dampening elements** and therefore requires no special foundation or factory erectors for its **easy installation**. Low compression ratios per stage allow high cylinder loads with comparable low temperatures. Results are **high volumetric efficiency, low maintenance and more safety**.



### Reliable and rugged – Your benefit:

- Final pressure up to 351 bar
- Pressure tight, sealed crankcase
- Flow rate up to 260 Sm<sup>3</sup>/h
- High volumetric efficiency, low maintenance, more safety
- Easy to install, no special foundation required
- Easy to maintain
- Simple, compact design
- Bedded on vibration dampening elements

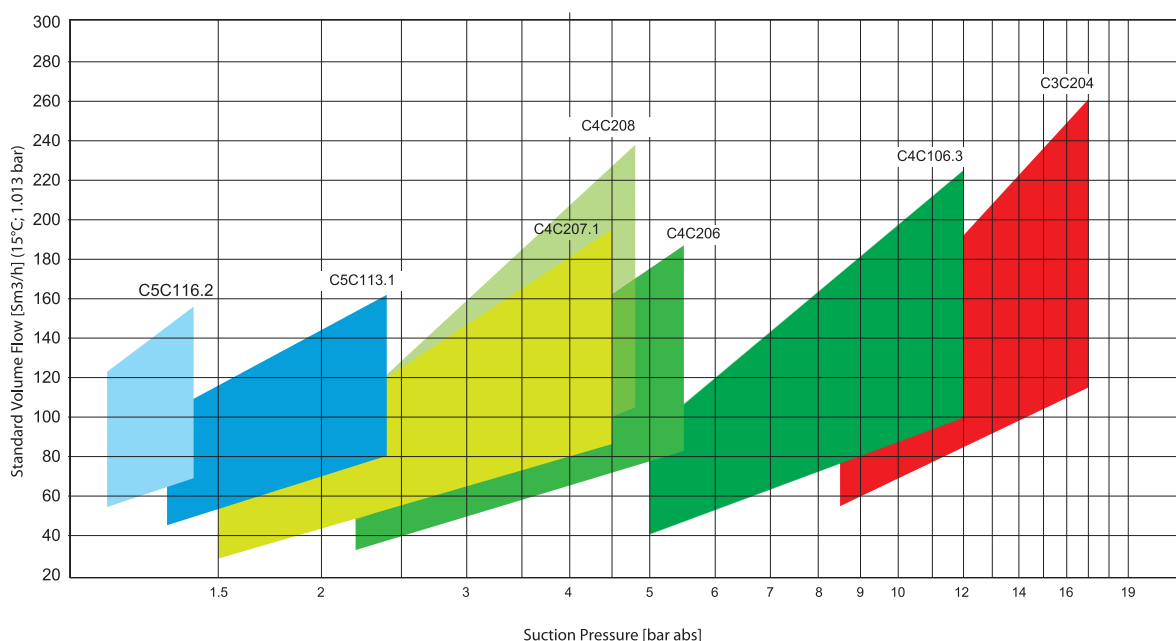
## Dimensions



## Technical Data\*

Suction pressure:	up to 17 bar abs**
Final pressure:	up to 351 bar abs
Flow rate:	30–260 Sm <sup>3</sup> /h
Power supply:	max. 50 kW
Weight:	approx. 1'350 kg (without motor)
Gases:	Natural gas, H <sub>2</sub> , He and other noble gases, air, N <sub>2</sub> , typical industrial gases, etc.
Applications:	CNG and H <sub>2</sub> refueling systems, bottle filling, oil- and gas production, chemical/petrochemical industry, gas purification and recovery, air-blast circuit breaker systems, seismic oil and gas exploration, etc.
Options:	Filter systems, control cabinets, acoustic canopies, etc.

## Flow rate diagram\* (e.g. Natural gas, final pressure 271 bar abs)



\*Subject to modification. Binding data on request. \*\*Higher inlet pressures available on request.

B-04-en 05.2005



**GreenField**

**GreenField AG**  
Güterstrasse 107  
CH-4133 Pratteln  
www.greenfield.ch

Tel. +41 61 827 35 35  
Fax +41 61 827 34 34  
info@greenfield.ch